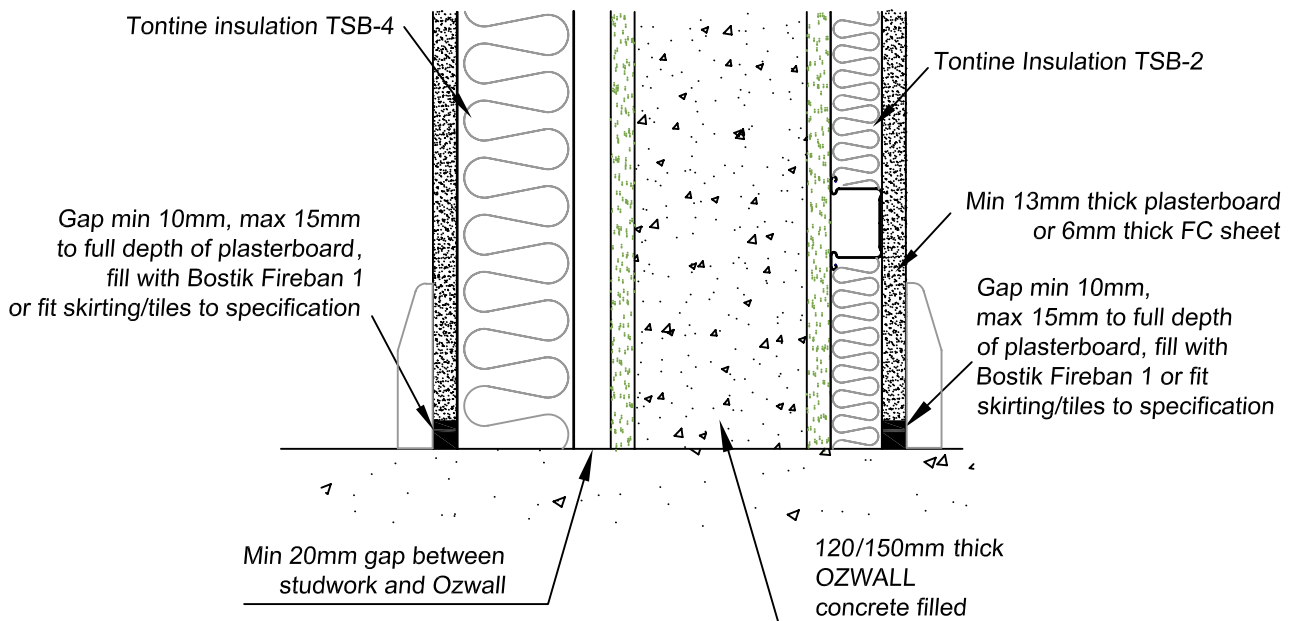
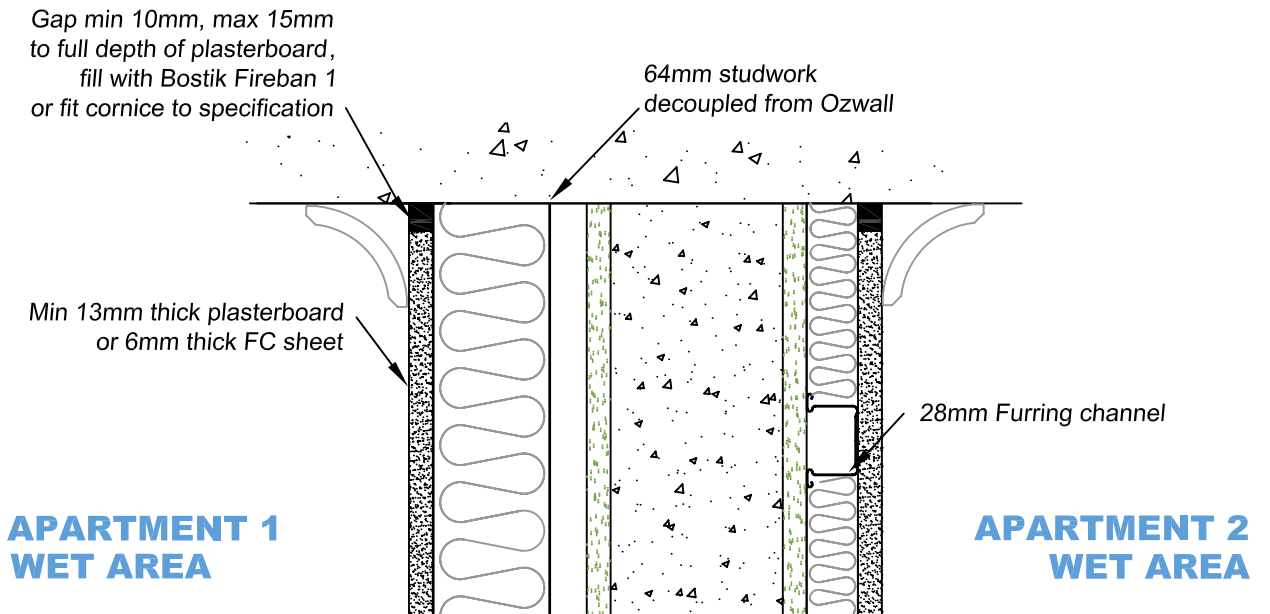


# OZWALL PANELS & PARTITIONS



NOTE. No mechanical connections are permitted between Ozwall and studwork



Nominal minimum overall width 244 to 288 depending on materials used

**INTERTENANCY WALL  $R_w + C_{tr}$  50 AND DISCONTINUOUS CONSTRUCTION BETWEEN APARTMENT WET AREAS**

OZWALL Pty Ltd

**Sound Insulation - 2**

|       |        |             |
|-------|--------|-------------|
| Date: | Issue: | Drawing No: |
| 08/05 | A      | OZ-SK 2     |